



HELPFUL LINKS:

- www.clearinghouse.adhl.org
- www.stopdrugs.org
- www.mfiles.org
- www.methresources.org
- www.theantidrug.com
- www.streetdrugs.org
- www.drugstory.org
- www.mamasite.net
- www.nida.nih.gov
- www.montanameth.org
- www.justthinktwice.com
- www.drugfree.org
- www.youthmethsummit.com
- www.atg.wa.gov
- www.dshs.wa.gov/dasa/services/certification/GB.shtml

SNOHOMISH COUNTY RESOURCES

Emergency Services 911
(Fire, Aid, Sheriff's Office, Police)

Animal Complaints.....425-388-3440
or your City Animal Control

Child Protective Services....1-866-280-6714

Federal Trade Commission: ID Theft
1-877-438-4338, www.consumer.gov/idtheft

Garbage or Septic Complaints ...425-339-5250
(Sno. Health Dist. Environmental Health)

Island Crossing Counseling Services
360-652-9640

Snohomish County Code Enforcement
Junk/junk vehicles/bldg. violations.....or
your City Code Enforcement
425-388-3311 (ask for Code Enforcement)

Snohomish County Alcohol/Drug Treatment
Info Line.....425-388-7473

Snohomish Regional Drug Task Force
Tip Line 425-388-3479
Public Website www.srdtf.org

Stillaguamish Tribal Police...360-474-9111

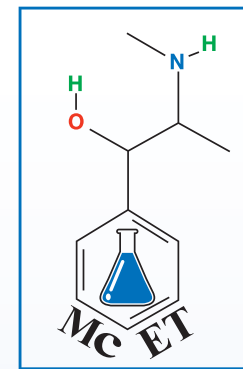
Tulalip Tribes.....800-869-8287

Helpful Facts About

METHAMPHETAMINE

By Snohomish Regional Drug Task Force

METH CRIMES ENFORCEMENT TEAM



**"TAKE BACK YOUR
COMMUNITY"**



www.srdtf.org

WHAT IS METH?

Methamphetamine, CSA Schedule II, is a potent central nervous system stimulant. Meth is smoked, snorted, injected or administered orally. Users refer to meth as “crank,” “speed,” “crystal” and “ice.” Signs of meth use include dilated pupils, sweating, dry mouth, flushed skin and tremors.

Methamphetamine users may also exhibit aggressive and psychotic behavior, irritability, anxiety, paranoia, and auditory hallucinations. There are also limitless long-term effects attributed to methamphetamine use including cardiac and neurological damage.

WHAT DOES METH LOOK LIKE?

- Finely shaved pieces of glass
- Chips or slivers of ice
- Rock salt
- Powder meth looks like off-white powder
- May come in tablet form

HOW IS METH TAKEN?

- Smoking
- Injecting
- Snorting
- Oral Ingestion



Same person, chronic METH user

EFFECTS OF METH USE:

- Paranoia
- Hallucinations
- Decreased social life
- Severe depression
- Memory loss
- Dramatic mood swings
- Acne, sores
- Dilated pupils
- Flushed skin
- Tremors
- Aggressive behavior
- Panic attacks
- Extreme weight loss
- Loss of pleasure
- Hyperactive behavior
- Sleep deprivation
- Impaired judgment
- DEATH

ACTIVITIES OR SIGNS OF A SUSPECTED DRUG HOUSE:

- Frequent visitors at all times of the day or night
- Late night activity
- Paranoid or odd behavior or extensive security
- Occupants appear unemployed, yet seem to have plenty of money and pay bills with cash
- Windows blackened or curtains drawn
- Chemical odors coming from the house, garbage or detached garage
- Neighbors engaged in unusual activities including disassembling cars or appliances for no apparent reason

Any single activity may or may not be sole proof that drug dealing is occurring. A combination of the above may be a reason for concern.

If you suspect illegal drug activity contact the Snohomish Regional Drug Task Force

**website: www.srdtf.org
or tipline: 425-388-3479**

“Take back your community”